

# Grady High School Additions and Renovations

August 21, 2019



## Agenda

Welcome – Betsy Bockman  
Design Process – Alvah Hardy  
Parking Design – Betsy Bockman  
Views of Parking  
Building Plans  
Q&A

# Project Committee, Communications & Design Reviews



This memorandum summarizes the approach of the APS Construction Management Team in maintaining structured design review process and communication between all parties during the planning, design, construction and renovation of Atlanta Public Schools' facilities.

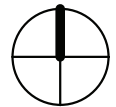
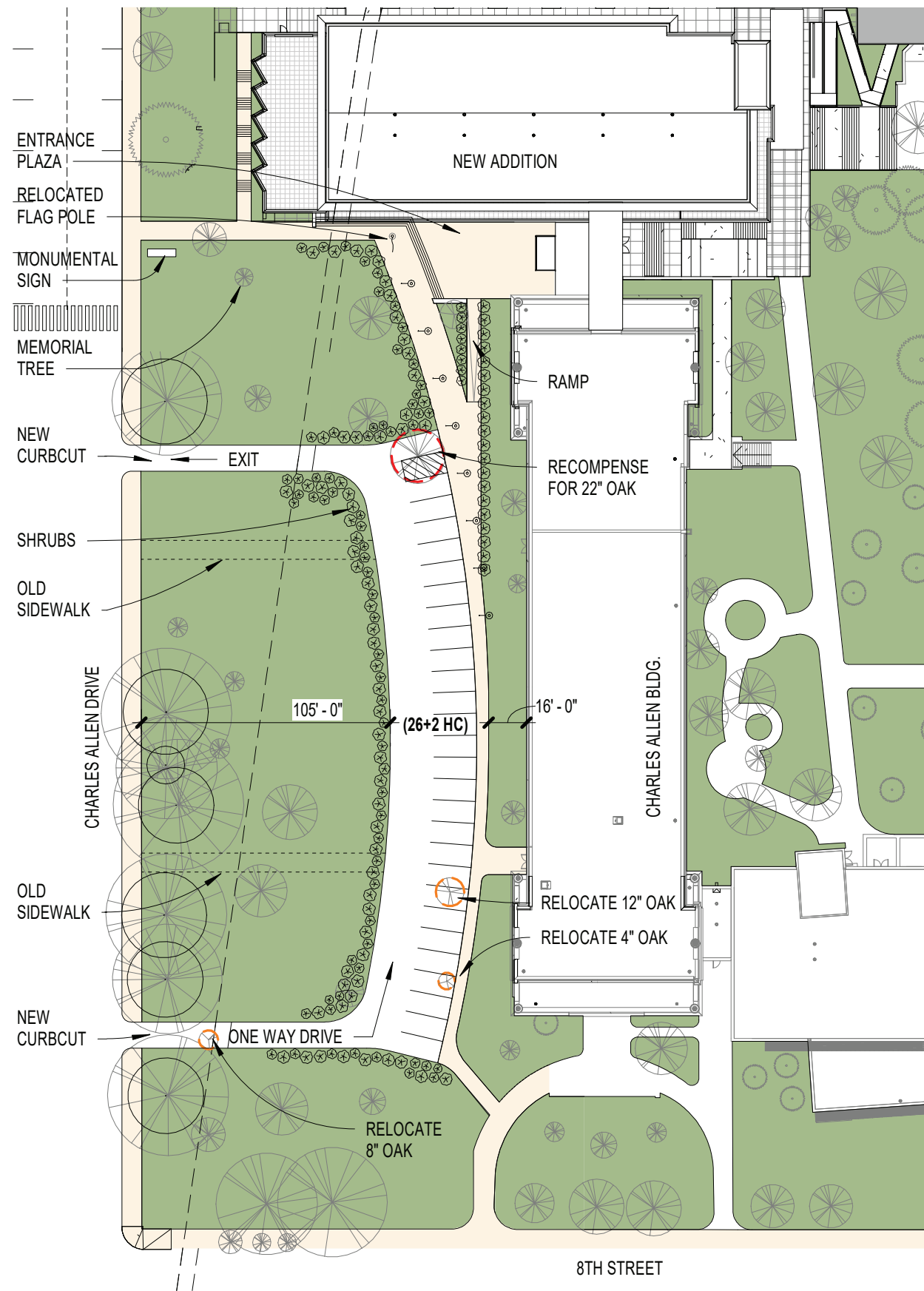
## 1. Establishment of a Project Committee

To ensure communication and participation of the school community throughout the design and construction process, the school Principal will be asked by the Project Manager to assist in the establishment of a Project Committee including representatives for the following parties:

- School Principal
- Associate Superintendent (instruction)
- Director / Executive Director (facilities)
- School Board Representative
- Project Manager
- Architect
- PTA Representative (2 max)
- Go Team Representative (2 max)
- School Faculty Representative
- Community Member (NPU Rep., etc.)

## 2. The Project Committee will meet during the course of the project as outlined below

1. **Meeting #1.0** Validate school needs and define Architect's scope of work.
2. **Meeting #2.0** Review Schematic Design options proposed by Architect.
3. **Meeting #3.0** Review Construction Documents at 50% completion and discuss the phased construction or relocation and construction process.
4. **Meeting #4.0** Construction briefing to be held prior to the start of construction to inform the Project Committee of what to expect during the construction phase.



PROJECT N° 20180083

08/14/19

PARKING LAYOUT - 28 SPACES

GRADY HIGH SCHOOL RENOVATION + ADDITION  
 929 CHARLES ALLEN DR. NE  
 ATLANTA, GA 30309





























QUESTIONS